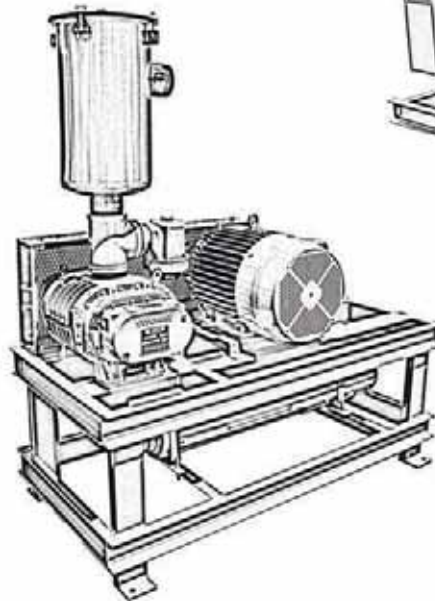
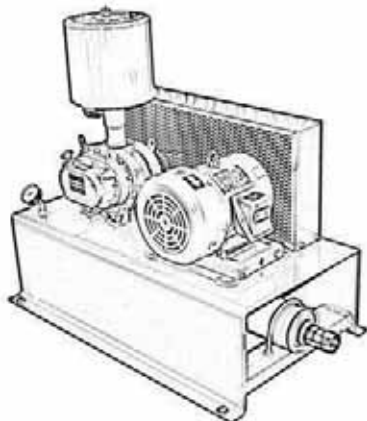
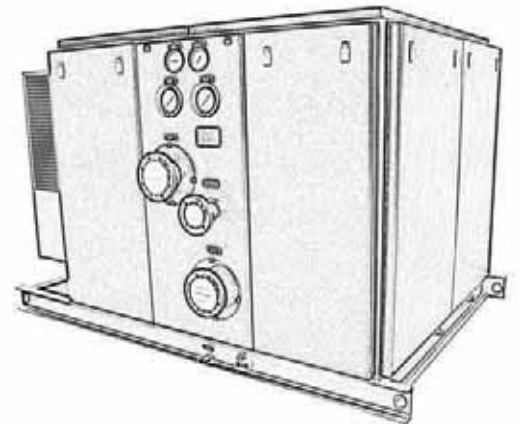
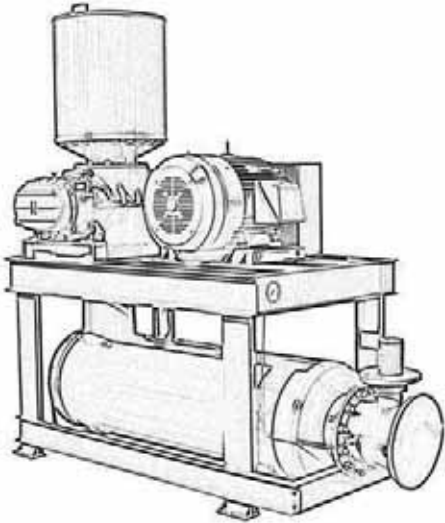


AIRMAC



Premium quality blower packages through innovative design and superior construction.

Blower Packages



Air Mac

AIRMAC

BLOWER SELECTION

Airmac blower packages offer flows to 10,000 CFM, vacuum to 16" HG and pressures to 20 PSIG.

Multiple impeller styles and profiles are available to choose from in the Gardner Denver rotary lobe product range.



Impeller Designs



Two-lobe Straight



Tri-lobe Helical



Helical Screw



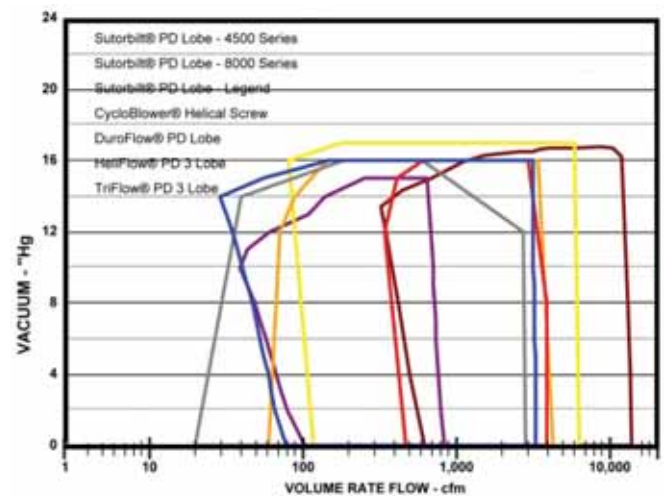
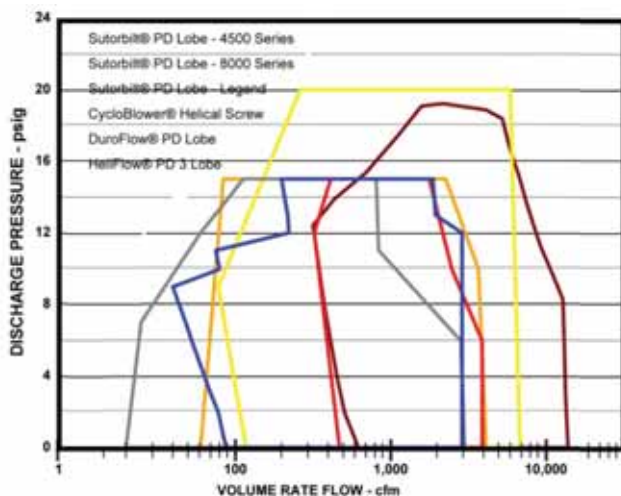
Sutorbilt Legend

- Sutorbilt Legend PD blowers are capable of reliably handling continuous loads
- Alloy steel timing gears assures non-slip timing under the most strenuous conditions
- Gear and bearing lubrication provides superior blower life
- High strength drive shaft provides greater blower durability and installation flexibility
- High strength cylinder with heat dissipating fins for reduced noise and vibration
- High temperature seals provide leak-free operation in severe-duty applications
- Available with Dual Splash Lubrication (DSL) and mechanical seals for gas applications



HeliFlow

- HeliFlow PD blowers feature a unique and innovative impeller design
- Solid helical tri-lobe rotors with Helical alloy timing gears
- Engineered for lower pulsations and lower noise
- Oversized spherical roller bearings provide superior overhung load capability
- High strength cylinder with heat dissipating fins for reduced noise and vibration
- Piston Ring air seals provide leak-free operation in severe-duty applications
- Dual Splash Lubrication (DSL) for reduced service intervals

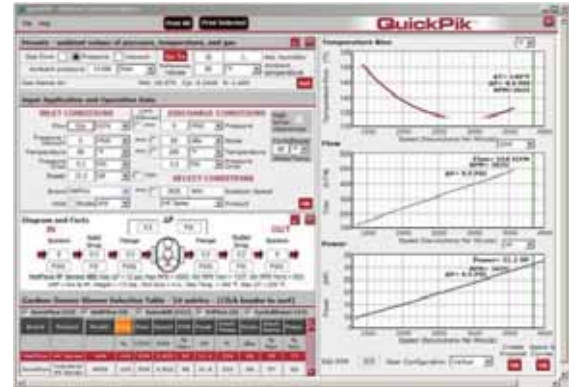


PACKAGE DESIGN

Airmac was founded on the principle of offering superior blower packages with better performance. A history of innovation, improvement and quality continue to set standards for the industry. Airmac has supplied blower packages for twenty years on an international scope, with installations in the Middle East, Central and South America, Indonesia and the United States.

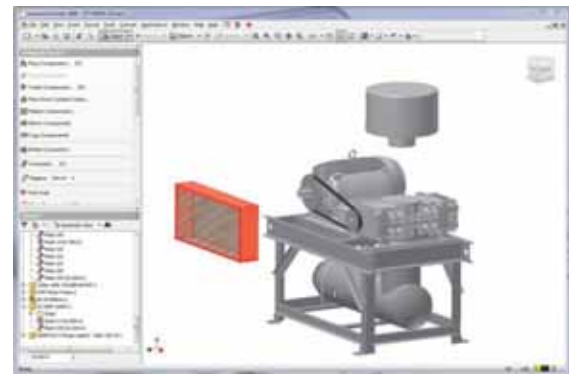
Performance

- Blower selection is made using computer modeling software carefully considering bearing life, % of maximum pressure, blower speed, temperature-rise and noise level.
- All inlet and discharge losses are factored into package performance calculations; CFM is stated at the discharge flange.
- Motor nameplate HP is not exceeded even at relief valve settings.
- Drives are designed for maximum life and minimum bearing load, with a service factor of 1.4 for belt drive and 2.0 for direct.



Design

- Auto Desk Inventor software allows solid modeling of the blower package assembly for improved form, fit & function. Component models can be created as well as parts manuals.
- Solid modeling and constraint software allows thorough evaluation prior to construction and testing.
- Each individual component is carefully selected for compatibility, flow - pressure - temperature capabilities.



Manufacturing & Testing

- Critical steps in the manufacturing process such as cutting, welding, piping, assembly, wiring and painting are performed by fabricator-welders, mechanics and technicians experienced in their craft with a proven track record of success in producing quality equipment.
- 16,000 SQ ft facility on 1 acre with overhead cranes.
- Every package is fully tested at operating and relief valve pressures. A test data sheet records amperage at multiple conditions, voltage, temperatures, and blower RPM as well as component nameplate data.
- 600 AMP Test Facility handles up to 350 HP motors. In addition the cell has a Variable Frequency Drive for up to 100 HP for 50 Hz testing, and power measurement.



PACKAGE STYLES

Base Mounted

B series is a family of PD blower packages from 2 HP to 20 HP with pressures to 15 PSIG and vacuum to 16" Hg. The "Base Mounted" design features 3/8" steel plate formed into an elevated "Top Hat" base providing a rigid mounting platform for the blower, motor and discharge silencer.



Table Top

TT series is a family of PD blower packages from 10 HP to 350 HP with pressures to 20 PSIG and vacuum to 17" Hg. The classic "Table Top" design features a heavy duty structural steel frame which provides a ridged mounting platform for the blower, motor and drive. Silencer mounting minimizes contact points with the frame reducing mechanical transmission of the silencer shell noise resulting in a lower overall noise level.



Clam Shell

CS series is a family of enclosed PD blower packages from 2 HP to 20 HP with pressures to 15 PSIG and vacuum to 16" Hg. The hinged "flip top" fiberglass top locks into place to stay open making access to the motor, blower and belt drive fast and easy. The weather proof design means it can be installed outdoors, noise levels vary depending on the flow and pressure but do not exceed 85 dBA at one meter free field.



Steel Panel

Q series is a family of enclosed PD blower packages from 15 HP to 350 HP with pressures to 15 PSI and vacuum to 16" Hg. Powder coated 16 gauge sheet metal panels are mounted to a structural steel frame that encapsulates and protects the entire blower package. The weather proof design means it can be installed outdoors, noise levels vary depending on the flow and pressure but do not exceed 85 dBA at one meter free field.



Built to Spec

Have your own specifications and design? Let us work with you to build a package which meets your individual needs. A number of our customers are OEM's who incorporate our blower packages into their product offering.

We are familiar with a number of working arrangements. In some cases our customers give us a concept on a napkin. In others detailed drawings and specifications are submitted for us to follow. Either way we are capable of serving a variety of roles in the design, fabrication and installation process.

