

UNIMAC



Premium quality blower packages through innovative design and superior construction.

TT Series Blower Packages



TT SERIES BLOWER PACKAGES

TT Series rotary lobe blower packages offer flows to 10,000 CFM, vacuum to 16" HG and pressures to 20 PSIG.

Blower selection is made using computer modeling software carefully considering bearing life, % of maximum pressure, blower speed, temperature rise and noise level. Multiple impeller styles and profiles are available to choose from in the Gardner Denver rotary lobe product range.



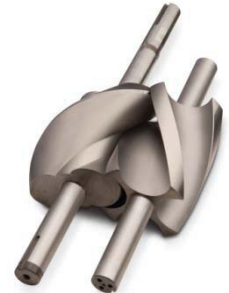
Impeller Designs



Two - lobe Straight



Tri -lobe Helical



Helical Screw



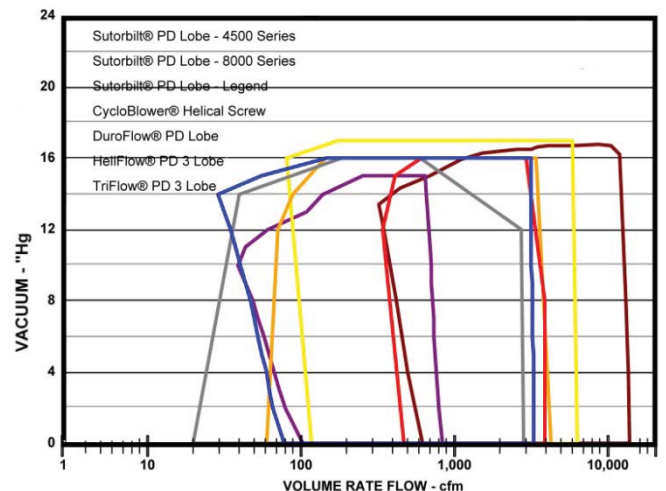
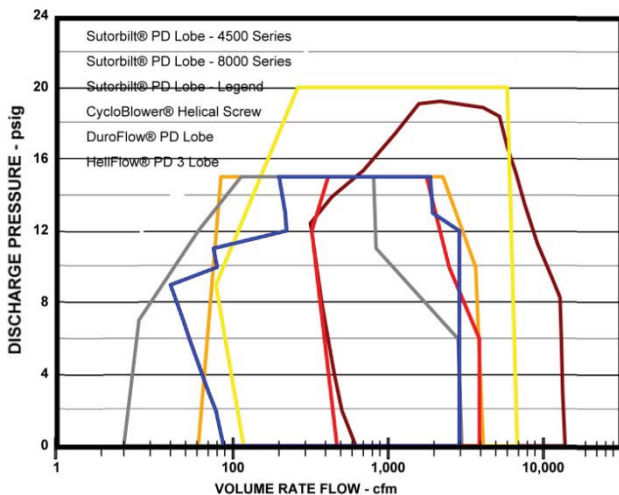
Sutorbilt Legend

- Sutorbilt Legend PD blowers are capable of reliably handling continuous loads
- Alloy steel timing gears assures non-slip timing under the most strenuous conditions
- Gear and bearing lubrication provides superior blower life
- High strength drive shaft provides greater blower durability and installation flexibility
- High strength cylinder with heat dissipating fins for reduced noise and vibration
- High temperature seals provide leak-free operation in severe-duty applications
- Available with Dual Splash Lubrication (DSL) and mechanical seals for gas applications

- HeliFlow PD blowers feature a unique and innovative impeller design
- Solid helical tri-lobe rotors with Helical alloy timing gears
- Engineered for lower pulsations and lower noise
- Oversized spherical roller bearings provide superior overhung load capability
- High strength cylinder with heat dissipating fins for reduced noise and vibration
- Piston Ring air seals provide leak-free operation in severe-duty applications
- Dual Splash Lubrication (DSL) for reduced service intervals



HeliFlow



TT SERIES BLOWER PACKAGES

Performance

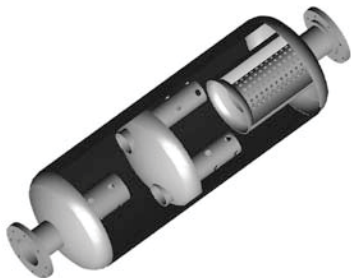
- All inlet and discharge losses are factored into package performance calculations; CFM is stated at the discharge.
- Motor nameplate HP is not exceeded even at relief valve settings.
- Drives are designed for maximum life and minimum bearing load, with a service factor of 1.4 for belt drive and 2.0 for direct.
- All packages are tested at design and relief valve conditions. Readings are recorded on a Test Data Report.



The classic “Table Top” design features a heavy duty structural steel frame which provides a ridged mounting platform for the blower, motor and drive. Silencer mounting minimizes contact points with the frame reducing mechanical transmission of the silencer shell noise resulting in a lower overall noise level.



A combination inlet silencer filter incorporates multiple silencing tubes around the outside of the base and a central tubular steel acoustic section layered with absorptive media for maximum attenuation. In addition the weatherproof hood is lined with a “quiet band” of sound deadening barrier material. A dry type replaceable element removes 99% of particles 2 micron and larger.



A chambered reactive/absorptive discharge silencer reduces the noise and pulsation energy generated by the blower. The all welded steel silencer is positioned as close to the blower connection as possible to maximize the effectiveness.



The relief valve is rated for the full capacity of the blower. With a diaphragm assist spring loaded design the valve maintains repeatable set pressures after numerous cycles and remains tight till it reaches “cracking” pressure. Most importantly the valve consistently re-sets below set pressure and does not flutter.



TT-7028-150 Belt Drive



TTD-4506-50 Direct Drive



TT-5L-25 Vacuum



TT-6M-30 Belt Drive

Standard Equipment

- Positive displacement rotary blower
- Synthetic lubricant fill and level gauge
- Drive motor 208-230-460/3/60 1.15 SF ODP, EPACK
- V-Belt drive or Direct drive coupling
- Totally enclosed guard
- Oversized inlet silencer filter combination
- Full flow relief valve, Pressure or Vacuum
- Gauge, Pressure or Vacuum, SS, liquid filled
- Discharge silencer, chambered reactive/absorptive
- Flexible connector between blower & silencer
- Elevated structural rigid steel mounting base
- Drawings, instruction & operating manuals

Options

- Automatic Belt Tensioner
- Full acoustic enclosure
- TEFC, IP-55 drive motor
- Discharge check Valve
- Air filter maintenance gauge
- Premium efficiency motor
- Weighted relief valve
- Temperature gauge
- IEEE-841 motor
- Additional Flex connector
- High air temperature switch
- 380/3/50 & 575/3/60 voltages
- VFD variable frequency drive
- Across the line motor starter
- Custom paint colors

UNIMAC

Unimac LP, founded on the principle of offering superior blower packages, has a history of innovation and excellence that sets standards for the industry. For twenty years Unimac LP has supplied blower packages on an international scope, with installations in the Middle East, Central and South America, Indonesia and the United States.

Our 16,000 sq. ft. shop is located on over an acre with an overhead crane, welding shop, metal-cutting saws and paint booth. A 600-amp test stand allows full load testing up to 250 HP and a VFD drive allows testing with 50 Hz power, common for international voltages.

Products are designed using Autodesk INVENTOR 2009, and manufactured in house, adhering to standardized quality control procedures. Critical steps in the fabrication process such as cutting, welding, piping, wiring and painting are performed by fabricator-welders, mechanics and technicians experienced in their craft with a proven track record of success in producing quality equipment. The end result is a consistent level of high quality that ships on time and performs as expected.

Pre-designed packages range from bare bones "Base Mounted" to "Quiet Enclosed" for maximum noise attenuation. By standardizing our designs we can streamline the whole manufacturing process, providing an excellent value with faster delivery. Our products incorporate innovative design concepts with added features to improve reliability, extend useful life, and make routine service easier. Attention to detail and an exceptional level of construction quality are evident throughout our products.

Sizes from 1 to 27,000 CFM • Pressures to 40 PSI • Vacuum to 27" Hg • Combined Pressure-Vacuum



Base Mounted



Table Top



Clam Shell



Quiet Enclosed



Gas Booster

